

## 6 Specifications

<b>Indicators</b>	Single-color LED indicates card power
<b>Host Interface</b>	32-bit, 33MHZ, Universal PCI slot
<b>Size</b>	103.51 mm x 139.70 mm x 21.60 mm [4.075" H x 5.50" L x 0.850" W]
<b>Weight</b>	3.4 oz. (96 g)
<b>Power Requirements</b>	5V @ 80 mA (does not include PC Card power requirements)
<b>Controller</b>	Texas Instruments PCI1410 single-socket CardBus controller

## 7 Warranty

Adtron warrants this product to be free from defects in materials and workmanship for one year. If this product fails within one year due to such a defect, Adtron will repair or replace this product at no charge.

This warranty does not apply if this product has been damaged by abuse, accident, disaster, misuse or incorrect installation.



ESD Caution

Static electricity may be discharged through the SDDPCI. In extreme cases this may temporarily interrupt the operation or damage components. To prevent this, touch a grounded device, such as a computer case, prior to handling.

There are no user-serviceable components within the SDDPCI.

### NOTICE

This manual describes the features of Adtron's SDDPCI. Adtron reserves the right to modify, amend, or in any way change the contents and/or products described herein, at any time, without notification.

The information contained in this document is provided for reference only. Adtron Corporation does not assume any liability arising out of the application or use of the products described herein. This document may contain or reference information or products protected by copyrights or patents and does not convey any license under the patent rights of Adtron Corporation, nor the rights of others.

Adtron Corporation  
4415 E. Cotton Center Blvd.  
Suite #100  
Phoenix, AZ 85040  
<http://www.adtron.com>

### Trademarks

All trademarks are held by their respective owners.  
Copyright © 2001 Adtron Corporation.  
All rights reserved.



Revision: O  
PN: 610200063  
EN: P17022

# Adtron SDDPCI Installation Manual

## 1 Introduction

Congratulations on your purchase of the Adtron SDDPCI! The SDDPCI is a 1997 PC Card compliant PC Card interface that supports standard 68-pin memory and I/O cards, including SRAM, ATA Flash and hard drives, FAX/MODEMS, and network PC Cards. The SDDPCI also supports 32-bit CardBus PC Cards, including 100 MBit Ethernet, IEEE 1394/Firewire, and video-conferencing PC Cards. However, Zoom Video is not supported.

This manual describes the installation of the SDDPCI. The software required for the SDDPCI depends on the Operating System that you are running. Most modern Operating Systems will support the SDDPCI with built-in drivers. The PC Card that you are using also may require its own drivers - consult the PC Card manufacturer's documentation.

### System Requirements

IBM PC or compatible computer *with PCI slot*

- Windows 95/98/98SE/ME, Windows 2000 Professional
- Windows NT v4.0 Workstation Service Pack 5 or above
- Linux (RedHat v6.2 tested - kernel 2.2.14, pcmcia-cs-3.1.25)

**Before beginning the installation, turn the computer's power OFF.**

## 2 Hardware Installation

The SDDPCI installs into a 32-bit PCI slot in a few easy steps:

1. Turn off power to the computer.
2. Remove the cover of the computer. Refer to the computer documentation for details.
3. Locate an empty PCI slot. A PCI slot will correctly accept the gold fingers on the edge of the SDDPCI.
4. If the rear slot opening has a cover, remove it to expose the rear opening.
5. With **POWER OFF**, insert the SDDPCI fully into the PCI slot. Make sure the PC Card connector and ejectors are accessible through the rear slot opening.
6. Secure the SDDPCI with a screw.
7. Replace the computer cover.
8. Turn the computer power back on.

### Windows 95/98/98SE/ME/2000

The system will detect the SDDPCI and may prompt for the Windows Installation disk. If so, follow the prompts to complete the installation. Proceed to Section 3 to verify the SDDPCI is listed in Device Manager.

### Windows NT v4.0 SP5+

Windows NT will not detect the SDDPCI or show it as installed. Proceed to Section 4 for the Software installation.

### 3 Checking Hardware Installation

The SDDPCI shows up in the Device Manager under **PCMCIA socket**. To open the Device Manager, follow these steps:

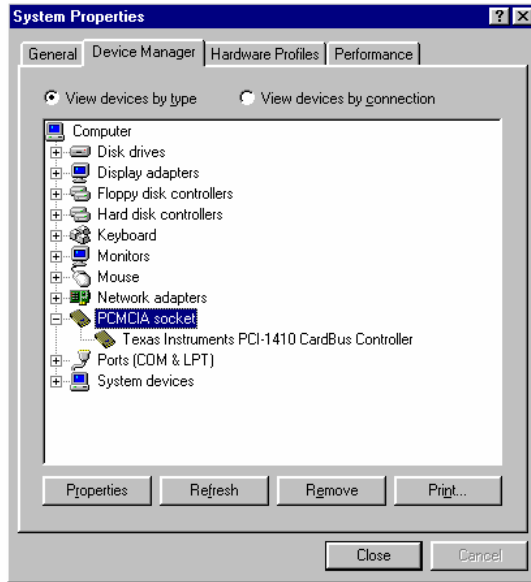
#### Windows 95/98/98SE/ME

Click on Start, Settings, Control Panel, run System, Device Manager tab.

#### Windows 2000

Click on Start, Settings, Control Panel, run System, Hardware tab, Device Manager.

Once in Device Manager, expand the **PCMCIA socket** category. "Texas Instruments PCI-1410 CardBus Controller" should be listed. If it is not, see Troubleshooting.



### 4 Software Installation

The SDDPCI will require additional software depending on what Operating System (OS) you are running. Refer to the table below:

Operating System	Software
Windows 95/98/98SE/ME/2000	Softex WinRoute
Windows NT v4.0 SP5+	SystemSoft CardWizard v5.1 for Windows NT
Linux	Package <b>pcmcia-cs-3.1.25</b> or higher

After confirming that the hardware is properly installed, install the appropriate software.

#### Windows 95/98/98SE/ME/2000

Insert the WinRoute disk into the floppy drive and run **SETUP.EXE**. Follow the prompts and reboot when prompted.

#### Windows NT v4.0 SP5+

Install Service Pack 5 at a minimum before installing CardWizard. Insert Disk 1 of CardWizard and run **SETUP.EXE**. When prompted for the configuration, choose "Desktop (No ISA)". Follow the prompts and reboot when prompted.

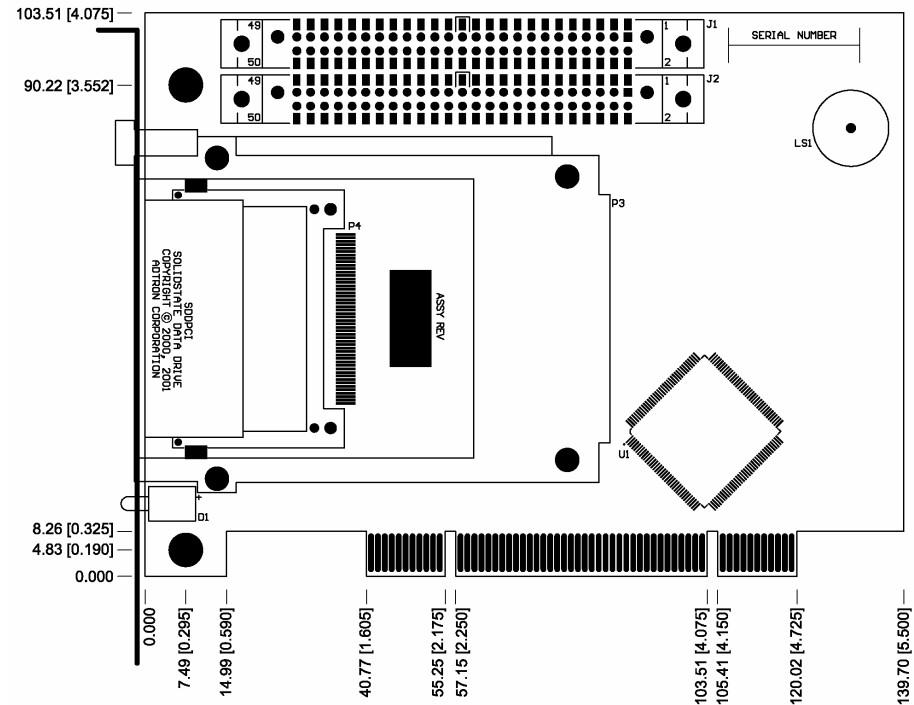
The SDDPCI is now ready for use. After inserting certain PC Cards, the system may prompt you for a driver. Insert the manufacturer's disk, if necessary, or contact the PC Card manufacturer for more information.

### 5 Troubleshooting

The SDDPCI is simple to install and operate. However, if you experience problems, the table below lists some common problems and possible solutions.

Problem	Possible Solutions
The SDDPCI isn't detected as a new device after I boot.	Try re-seating the SDDPCI or try installing it into a different PCI slot.
After inserting an ATA PC Card, the system beeps, but I don't get a drive letter.	Have you installed the software? Install the appropriate software and retry it.  The PC Card may have an incompatible format that the Operating System does not recognize. Try reformatting the PC Card with a DOS FAT format.  PC Cards such as ATA and MODEMs require an IRQ and the system may not have any available IRQs. Free up an IRQ and retry it.
After I eject a PC Card, the system stops responding (hangs).	You should always "Stop" the card using the PCMCIA icon or CardWizard before ejecting it.

For more information, visit the Adtron Web site at <http://www.adtron.com> or send email to [techsupport@adtron.com](mailto:techsupport@adtron.com)



Dimensions in mm [inches] - Not to scale